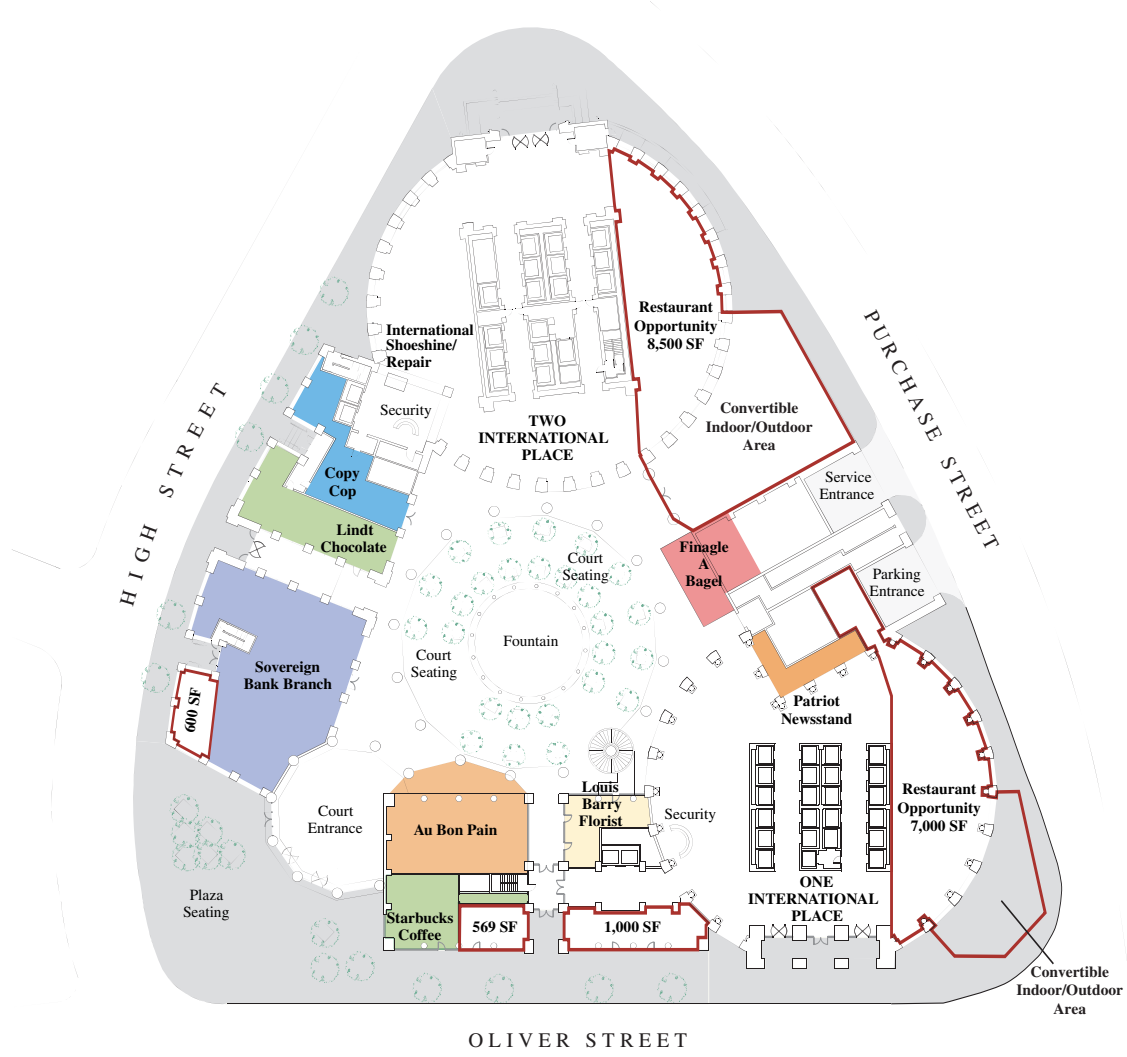


INTERNATIONAL PLACE
The Chiofaro Company

ONE/TWO INTERNATIONAL PLACE
RETAIL FLOOR PLAN

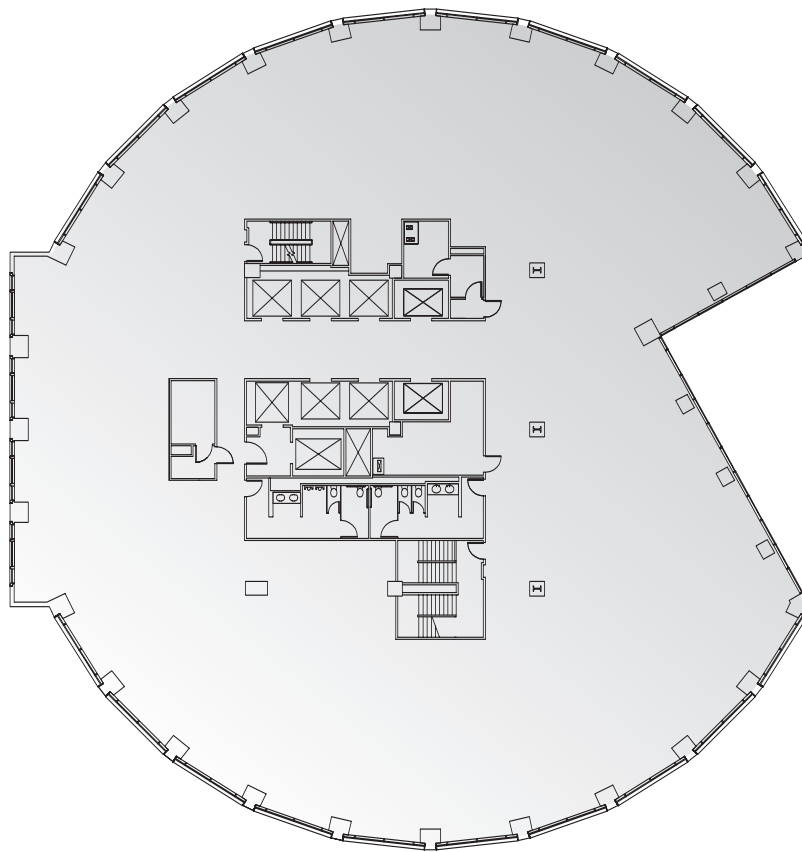




INTERNATIONAL PLACE

The Chiofaro Company

ONE INTERNATIONAL PLACE TYPICAL HIGH-RISE FLOOR PLAN

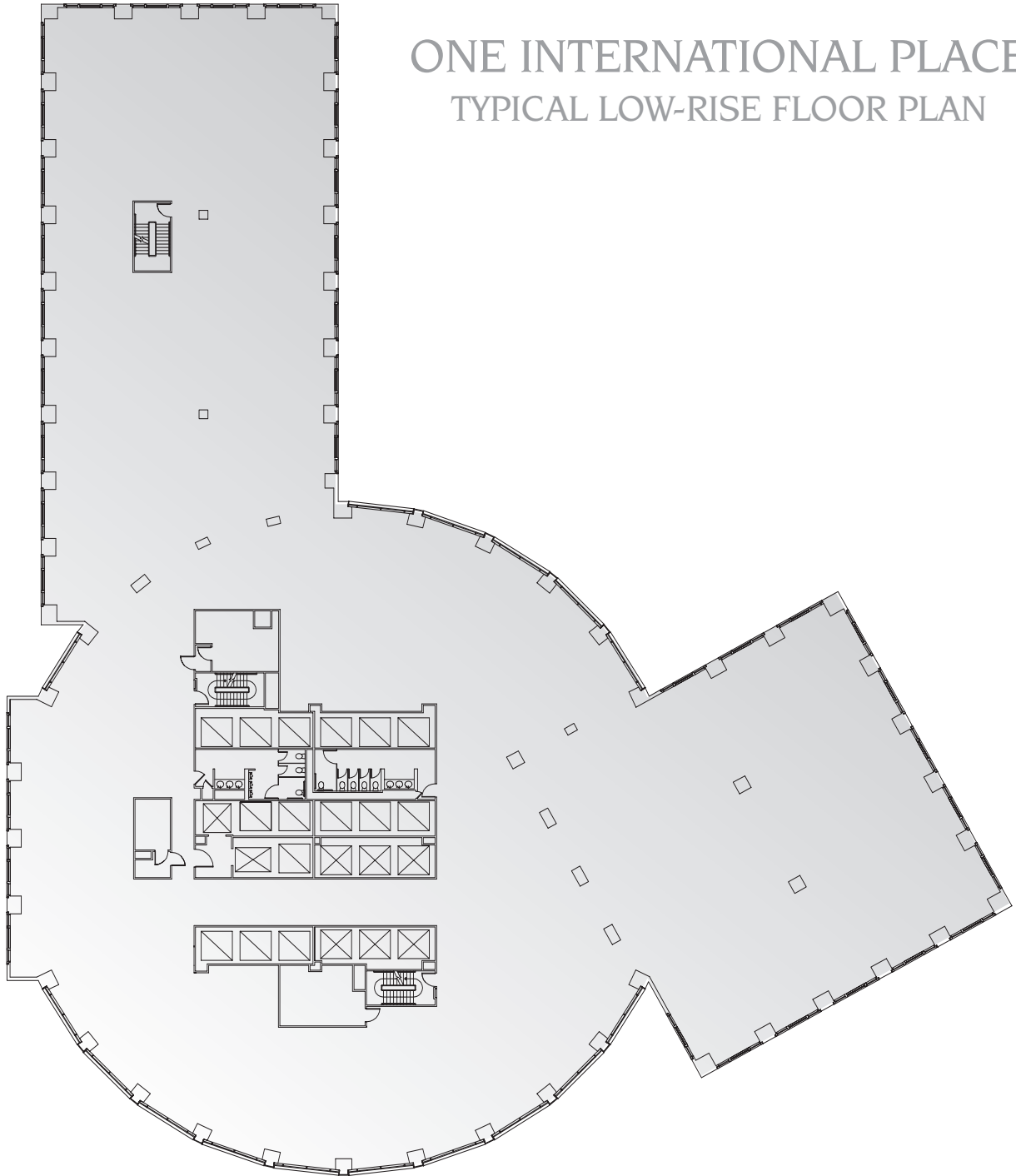




INTERNATIONAL PLACE

The Chiofaro Company

ONE INTERNATIONAL PLACE TYPICAL LOW-RISE FLOOR PLAN

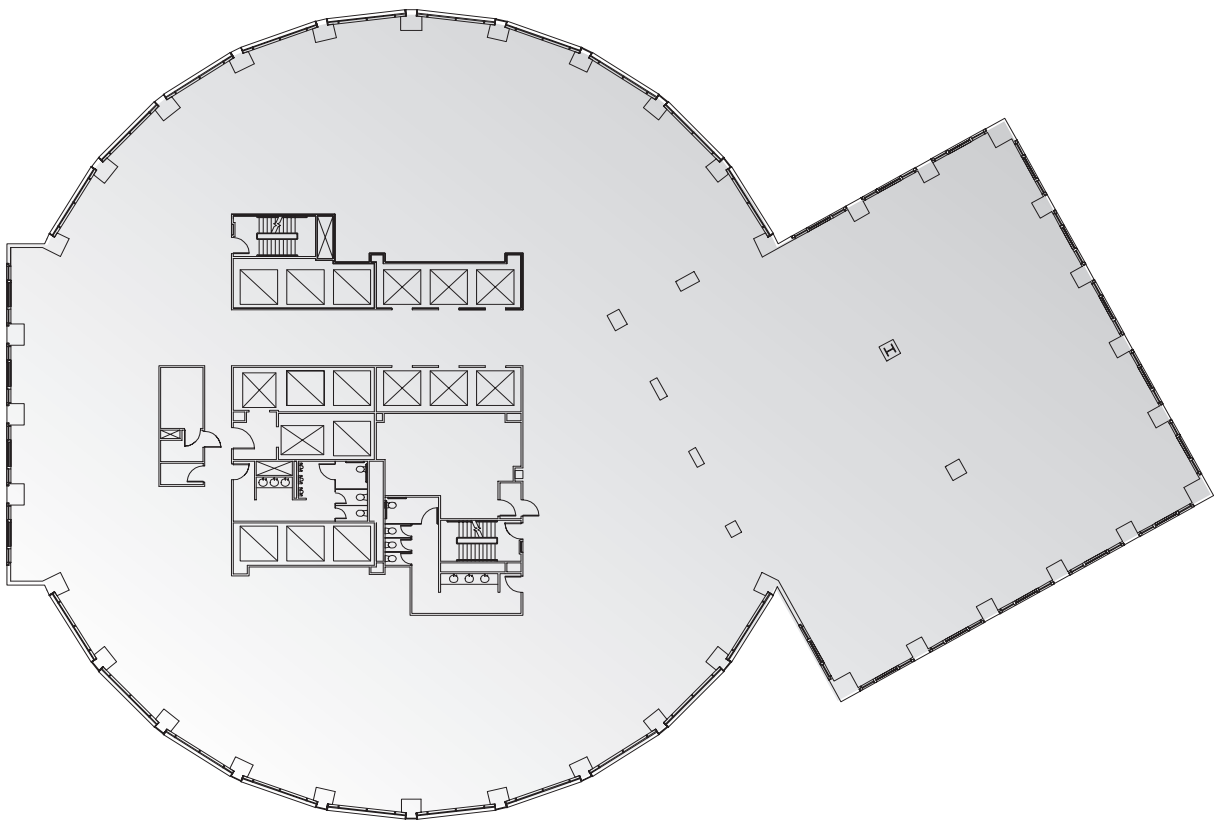




INTERNATIONAL PLACE

The Chiofaro Company

ONE INTERNATIONAL PLACE TYPICAL MID-RISE FLOOR PLAN

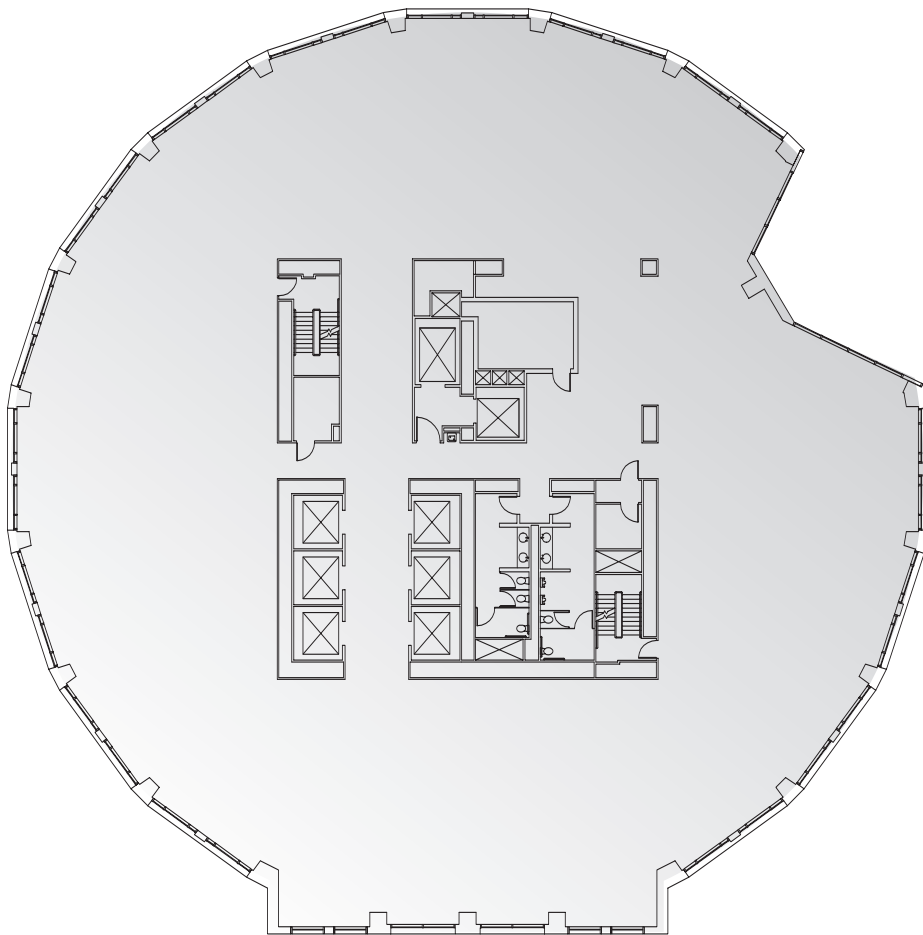




INTERNATIONAL PLACE

The Chiofaro Company

TWO INTERNATIONAL PLACE TYPICAL HIGH-RISE FLOOR PLAN

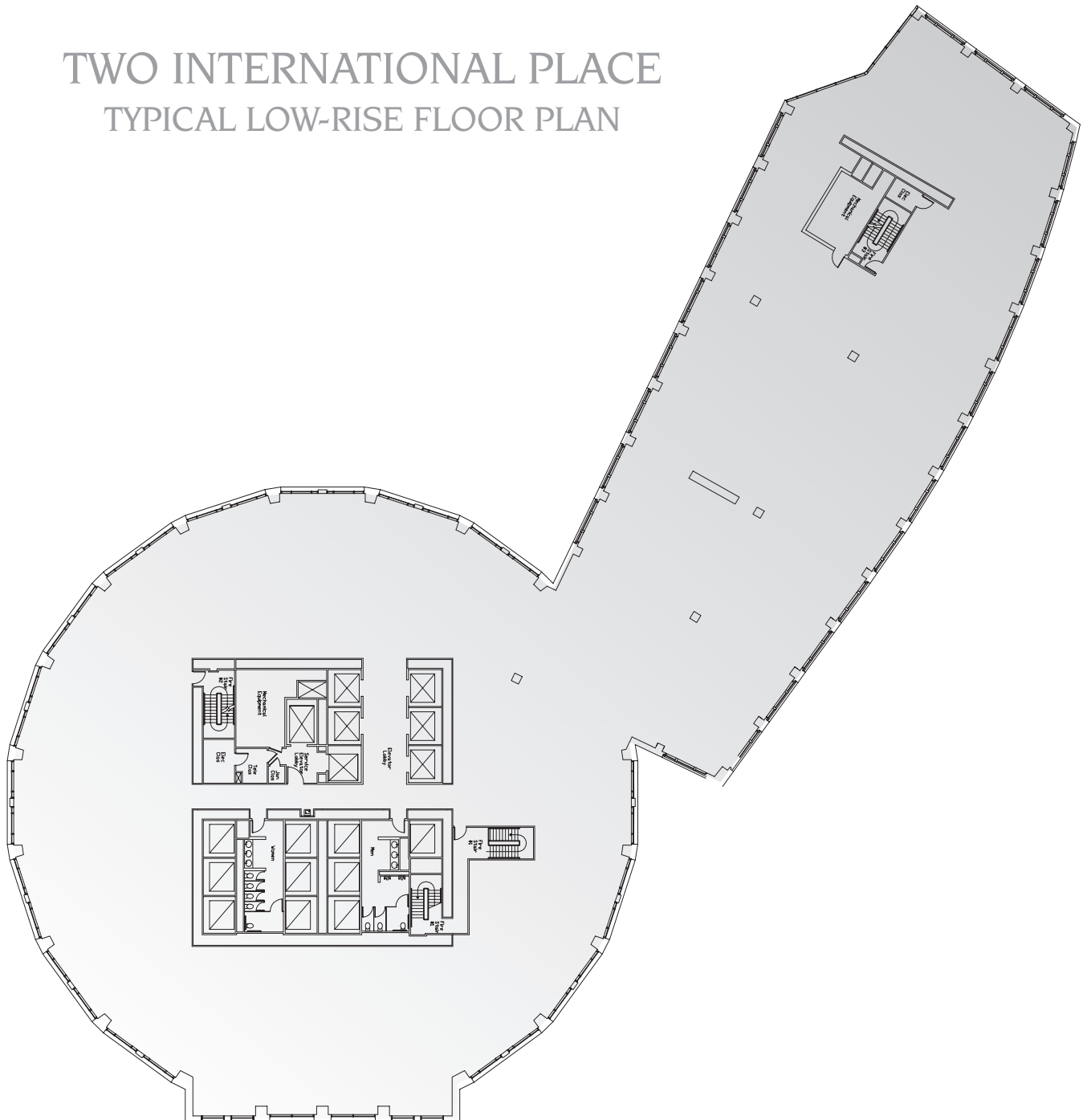




INTERNATIONAL PLACE

The Chiofaro Company

TWO INTERNATIONAL PLACE TYPICAL LOW-RISE FLOOR PLAN





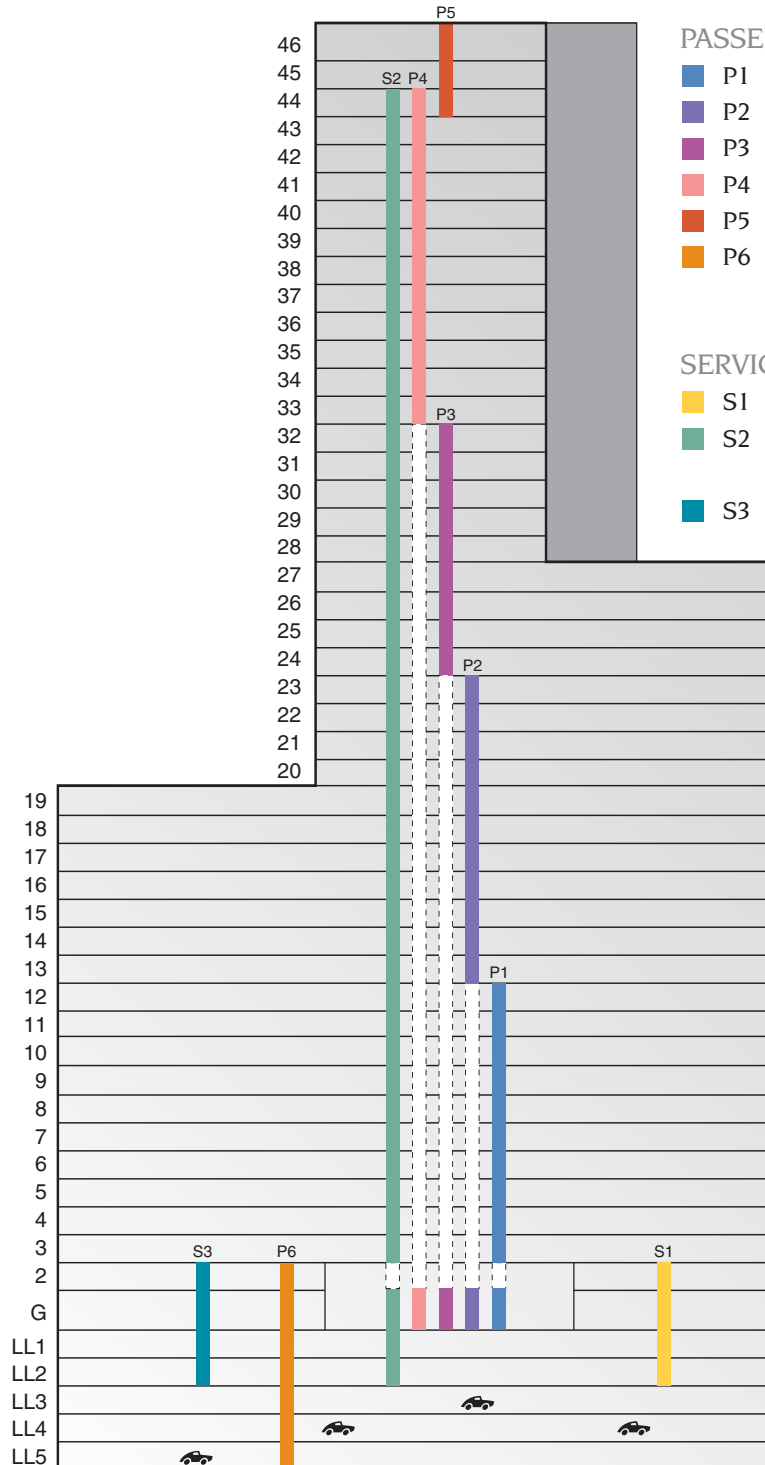
INTERNATIONAL PLACE

The Chiofaro Company

High-rise
17,000 Square Feet

Mid-rise
24,000 Square Feet

Low-rise
32,000 Square Feet



PASSENGER ELEVATOR BANKS

- P1 floors G3-12 6 elevators
- P2 floors 13-23 6 elevators
- P3 floors 24-32 4 elevators
- P4 floors 33-44 5 elevators
- P5 floors 44-46 2 elevators
- P6 floors LL5-2 2 elevators

SERVICE ELEVATORS

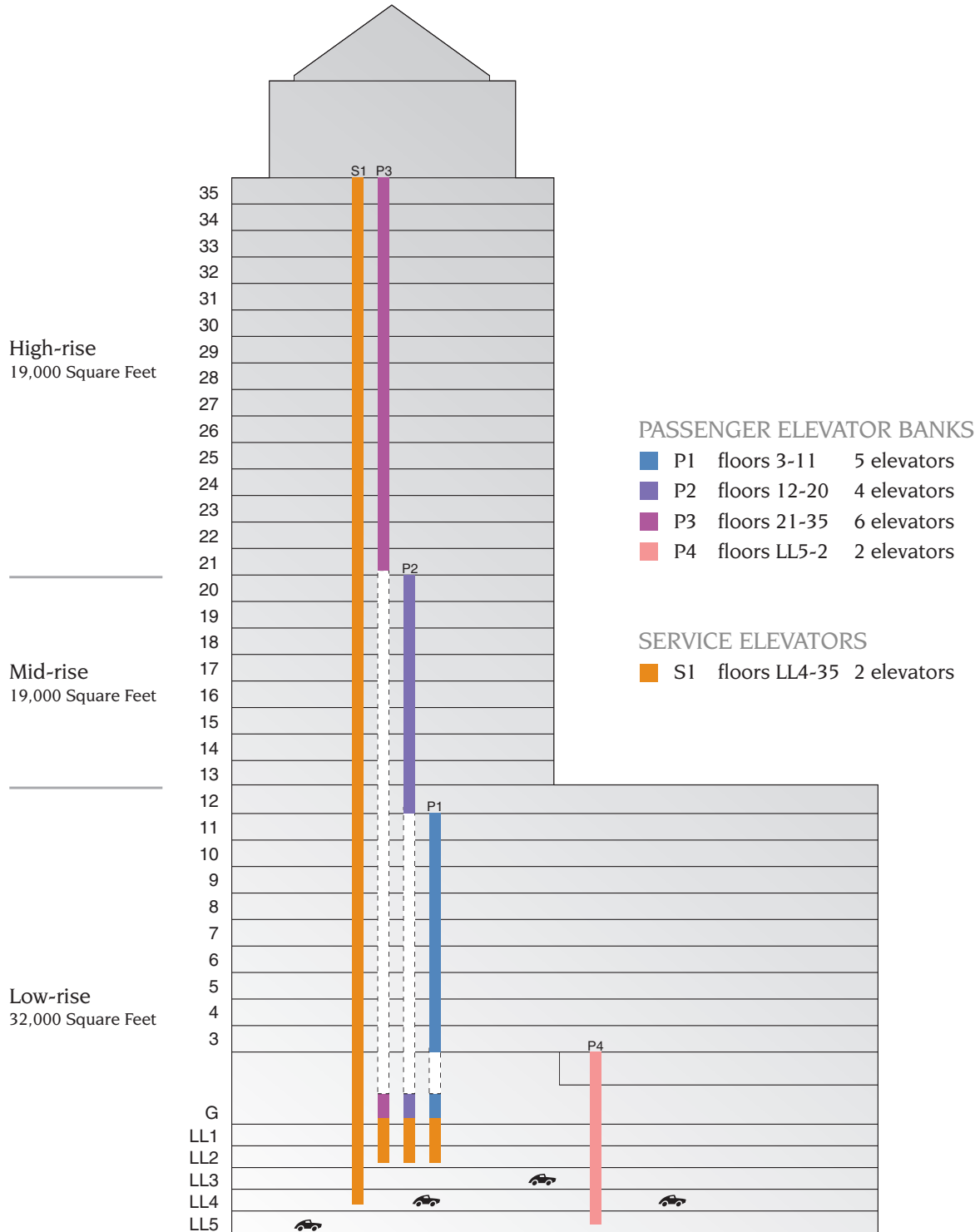
- S1 floors LL2-2 1 elevator
- S2 floors LL2-G, 3-44 2 elevators
- S3 floors LL2-2 1 elevator

ONE INTERNATIONAL PLACE - Elevator Diagram



INTERNATIONAL PLACE

The Chiofaro Company



TWO INTERNATIONAL PLACE - Elevator Diagram